

BRECON

smart vibration technology



General Catalog

Program 2010

External Vibrators
Internal Vibrators
Control Systems

Table of Contents

1	External Vibrators	4	3	Internal Vibrators	18
	750/900 rpm	4		Internal Vibrators PROFI LINE	18
	1000/1200 rpm	5		Spade Grip Vibrators PROFI LINE	18
	1500/1800 rpm	6		Spare Heads for PROFI LINE	19
	3000/3600 rpm	7		Mobile Frequency Converter (electro-mechanical)	20
	6000 rpm	8		Mobile Frequency Converters (electronic)	21
	SL 6000 rpm	8		Flexible Shaft Vibrators 12000 rpm	22
	9000 rpm	9		Drive Motors for Flexible Shaft Vibrators	22
	12000 rpm	9			
	SLIM2-Quick Release Vibrator	10			
	External Vibrator Accessories	11	4	Special Vibrators	24
	Special Bearing Grease	11		Direct current External Vibrators 3680	24
	Grease Gun	11		Tampers 3000/3600 rpm	25
				Accessories for tamping	25
2	Control Systems	12	5	Technical Drawings	28
	Electronic Frequency Converters	12			
	Mobile Frequency Converters (electronic)	13			
	Frequency Converters (electro-mechanical)	13			
	Distribution Boxes	14			
	Control System	15			
	Radio Controls	15			
	Large Display Indicators	15			
	CEE Plug Connections	16			

1

External Vibrators

BRECON External Vibrators

750/900rpm, IP65



18 159

	Part Number	Mechanical		Electrical		Dimensions						Weight [Kg]	Picture
		Centrifugal force [kN]	Working moment [kgcm]	Power input [kW]	Rated current [A]*	L x W x H							
						[mm]	h	l	b	d	m		
750rpm 50Hz 230/400V 3~	18 144 102	6,9	222	0,90	2,00	548 x 280 x 258	30	160	200	4x17	117	62,5	D
	18 147 102	10,3	330	1,10	2,50	584 x 300 x 280	35	165	230	4x22	131	82,0	D
	18 153 101	15,8	512	2,00	5,00	662 x 326 x 336	40	165	270	4x25	150	144,0	D
	18 159 101	22,1	712	2,50	6,00	693 x 355x 362	40	210	295	4x29	166	186,5	D
	18 163 101	26,5	860	3,00	6,80	693 x 355x 362	40	210	295	4x29	166	200,0	D
	18 167 101	37,3	1210	3,70	8,50	740 x 390 x 392	41	110	310	6x29	193	254,0	F
	18 171 101	46,6	1510	5,20	10,00	851 x 390 x 414	45	115	320	6x29	192	300,0	F
	18 175 101	60,4	1960	6,50	12,00	917 x 390 x 414	45	115	320	6x29	192	331,0	F
	18 178 101	74,0	2394	7,00	13,00	1001 x 456 x 456	50	130	380	6x32	225	415,0	F
	18 181 101	84,3	2734	8,00	14,00	1007 x 456 x 456	50	130	380	6x32	225	446,0	F
	18 186 101	110,8	3600	10,00	10,05	1084 x 520 x 504	40	155	400	6x38	255	584,0	F
	18 189 101	133,9	4340	11,00	11,50	1138 x 520 x 504	40	155	400	6x38	255	672,0	F
	18 191 101	155,0	5028	13,10	27,80	1100 x 540 x 534	50	117	394	6x31	265	740,0	F
	18 192 101	179,0	5794	14,00	29,70	1170 x 540 x 534	50	117	394	6x31	265	790,0	F
900rpm 60Hz 265/460V 3~	18 144 114	9,8	222	0,95	2,00	548 x 280 x 258	30	160	200	4x17	117	62,5	D
	18 147 114	14,7	330	1,20	2,60	584 x 300 x 280	35	165	230	4x22	131	82,0	D
	18 153 113	22,8	512	2,30	5,00	662 x 326 x 336	40	165	270	4x25	150	144,0	D
	18 159 113	31,6	712	2,80	6,00	693 x 355 x 362	40	210	295	4x29	166	186,5	D
	18 163 113	38,3	860	3,30	7,00	693 x 355 x 362	40	210	295	4x29	166	200,0	D
	18 167 113	45,3	1020	4,10	8,50	740 x 390 x 392	41	110	310	6x29	193	241,0	F
	18 171 113	53,9	1210	5,80	10,00	770 x 390 x 414	45	115	320	6x29	192	280,0	F
	18 175 113	70,1	1580	7,20	12,00	838 x 390 x 414	45	115	320	6x29	192	308,0	F
	18 178 113	80,9	1820	8,00	13,00	901 x 456 x 456	50	130	320	6x32	225	380,0	F
	18 181 113	107,9	2430	8,50	14,00	907 x 456 x 456	50	130	380	6x32	225	435,0	F
	18 186 113	124,0	2800	10,80	18,00	964 x 520 x 504	40	155	400	6x38	255	543,0	F
	18 189 113	156,9	3540	12,00	20,00	1138 x 520 x 504	40	155	400	6x38	255	630,0	F
	18 191 113	189,0	4262	13,80	27,10	1010 x 500 x 485	50	117	394	6x31	265	695,0	F
	18 192 113	212,0	4773	14,50	28,40	1010 x 500 x 485	50	117	394	6x31	265	730,0	F

*rated current at 400V (50Hz) / 460V (60Hz)

External Vibrators

1

BRECON External Vibrators

1000/1200rpm, IP65



18 128

	Part Number	Mechanical		Electrical		Dimensions						Weight [Kg]	Picture
		Centrifugal force [kN]	Working moment [kgcm]	Power input [kW]	Rated current [A]*	L x W x H					m		
						[mm]	h	l	b	d			
1000rpm 50Hz 230/400V 3~	18 137 001**	6,0	107,0	0,30	1,10	340 x 220 x 225	140	90	154	4x13	110	32	D
	18 122 701	9,4	169,6	0,90	1,90	495 x 250 x 246	22	150	190	4x17	112	50	D
	18 125 721	12,3	222,0	1,00	2,10	548 x 280 x 258	30	160	200	4x17	117	62,5	D
	18 128 721	18,1	330,0	1,40	2,70	584 x 300 x 280	35	165	230	4x22	131	82	D
	18 130 701	28,0	548,0	2,40	5,20	662 x 326 x 336	40	165	270	4x25	150	144	D
	18 158 101	39,2	710,2	2,70	6,00	693 x 355 x 362	40	210	295	4x29	166	186,5	D
	18 162 101	47,1	845,5	3,30	7,00	693 x 355 x 362	40	210	295	4x29	166	200	D
	18 166 101	55,9	1023,6	4,20	7,50	740 x 390 x 392	41	110	310	6x29	193	241,5	F
	18 170 101	66,7	1210,0	5,30	9,50	770 x 390 x 414	45	115	320	6x29	192	280	F
	18 174 101	86,3	1460,0	7,00	12,00	838 x 390 x 414	45	115	320	6x29	192	308	F
	18 177 101	100,0	1826,9	8,00	15,00	901 x 456 x 456	50	130	380	6x32	225	380	F
	18 180 101	124,5	2270,0	9,80	16,00	907 x 456 x 456	50	130	380	6x32	225	420	F
	18 183 101	133,4	2438,4	10,20	17,00	907 x 456 x 456	50	130	380	6x32	225	435	F
	18 185 101	153,5	2754,4	11,50	12,00	964 x 520 x 504	40	155	400	6x38	255	543	F
	18 188 101	172,1	3140,0	13,80	13,80	1018 x 520 x 504	40	155	400	6x38	255	610	F
18 190 101	206,0	3752,0	17,30	32,40	1120 x 620 x 610	55	140	520	8x45	265	905	E	
1200rpm 60Hz 265/460V 3~	18 137 713	7,1	90,0	0,65	1,50	452 x 255 x 233	20	120	180	4x17	105	36	D
	18 122 713	10,8	134,6	1,00	1,70	495 x 250 x 246	22	150	190	4x17	112	46	D
	18 125 723	13,2	165,0	1,15	1,90	486 x 280 x 258	30	160	200	4x17	117	56	D
	18 128 723	18,3	232,0	1,45	2,40	512 x 300 x 280	35	165	230	4x22	131	70	D
	18 130 214	33,6	425,0	2,28	4,00	662 x 326 x 336	40	165	270	4x25	150	128	D
	18 158 113	33,3	710,2	2,90	6,00	693 x 355 x 362	40	210	295	4x29	166	166	D
	18 162 113	46,6	845,5	3,60	7,00	693 x 355 x 362	40	210	295	4x29	166	180	D
	18 166 113	57,9	1023,6	4,50	7,50	740 x 390 x 392	41	110	310	6x29	193	221	F
	18 170 113	64,7	1210,0	6,20	10,00	770 x 390 x 414	45	115	320	6x29	192	255	F
	18 174 113	86,8	1460,0	7,50	12,00	838 x 390 x 414	45	115	320	6x29	192	280	F
	18 177 113	103,0	1826,9	8,60	13,80	901 x 456 x 456	50	130	380	6x32	225	348	F
	18 180 113	118,6	1500,0	10,80	17,00	907 x 456 x 456	50	130	380	6x32	225	372	F
	18 183 113	130,9	1654,0	11,00	17,50	907 x 456 x 456	50	130	380	6x32	225	383	F
	18 185 113	156,4	2754,4	12,50	18,50	964 x 520 x 504	40	155	400	6x38	255	500	F
	18 188 113	168,7	3140,0	15,00	23,50	1018 x 520 x 504	50	155	400	6x38	245	522	F
18 190 113	256,0	3241,0	18,00	31,40	1120 x 620 x 610	55	140	520	8x45	265	865	E	

*rated current at 400V (50Hz) / 460V (60Hz); **vibrators with 4m vibration-proof cable

1

External Vibrators

BRECON External Vibrators
 1500/1800rpm, IP65


18 136

	Part Number	Mechanical		Electrical		Dimensions						Weight [Kg]	Picture
		Centrifugal force [kN]	Working moment [kgcm]	Power input [kW]	Rated current [A]*	L x W x H [mm]	h	l	b	d	m		
1500rpm 50Hz 230/400V 3~	18 133 202 ¹⁾	1,0	8,0	0,15	0,32	270 x 165 x 125	25	115	135	4x10,5	78	7	A
	18 119 202	3,0	24,0	0,25	0,52	270 x 160 x 180	100	90	125	4x13	80	14	C
	18 136 102	6,0	48,0	0,40	0,78	300 x 220 x 225	140	90	154	4x13	110	25	C
	18 121 722	11,2	89,7	0,95	1,80	428 x 225 x 233	20	120	180	4x17	105	36	D
	18 124 701	16,7	134,6	1,10	2,00	461 x 250 x 246	22	150	190	4x17	112	46	D
	18 127 702	20,6	165,0	1,30	2,30	486 x 280 x 258	30	160	200	4x17	117	56	D
	18 129 702	27,2	217,0	1,75	3,00	512 x 300 x 280	35	165	230	4x22	131	70	D
	18 151 101	39,2	314,0	2,40	5,00	568 x 326 x 336	40	165	270	4x25	150	122	D
	18 157 101	52,0	420,5	3,50	6,00	609 x 355 x 362	40	210	295	4x29	166	165,5	D
	18 165 101	56,9	460,2	4,50	7,50	656 x 390 x 392	42	110	310	6x29	193	201,5	F
	18 169 101	69,1	559,4	6,00	11,00	686 x 390 x 414	45	115	320	6x29	192	233	F
	18 173 101	83,4	676,0	7,10	12,00	672 x 390 x 414	45	115	320	6x29	192	248	F
	18 176 101	93,2	762,1	7,80	12,50	731 x 456 x 456	50	130	380	6x32	225	314	F
18 179 101	119,6	984,2	10,50	17,50	737 x 456 x 456	50	130	380	6x32	225	345	F	
1800rpm 60Hz 265/460V 3~	18 133 214 ¹⁾	1,0	5,5	0,15	0,32	270 x 165 x 125	25	115	135	4x10,5	78	6	A
	18 119 214	3,0	16,6	0,25	0,55	270 x 160 x 180	100	90	125	4x13	80	13	C
	18 136 114	6,0	33,0	0,40	0,85	300 x 220 x 225	140	90	254	4x13	110	25	C
	18 121 723	11,0	61,6	1,00	1,70	428 x 225 x 233	20	120	180	4x17	105	32,5	D
	18 124 713	17,7	99,6	1,20	1,90	461 x 250 x 246	22	150	190	4x17	112	41,5	D
	18 127 714	19,6	110,0	1,40	2,20	486 x 280 x 258	30	160	200	4x17	117	50,5	D
	18 129 714	28,4	155,0	1,90	2,80	512 x 300 x 280	35	165	230	4x22	131	67,5	D
	18 151 113	42,7	232,4	2,60	4,80	568 x 326 x 336	40	165	270	4x25	150	114,5	D
	18 157 113	54,9	311,3	3,80	6,00	609 x 355 x 362	40	210	295	4x29	166	157	D
	18 165 113	60,8	345,8	5,00	7,50	656 x 390 x 392	41	110	310	6x29	193	196	F
	18 169 113	70,1	392,4	6,50	10,50	686 x 390 x 414	45	115	320	6x29	192	221	F
	18 173 113	83,4	472,7	7,30	11,00	672 x 390 x 414	45	115	320	6x29	192	233	F
	18 176 113	94,1	534,6	8,40	12,00	731 x 456 x 456	50	130	380	6x32	225	297	F
18 179 113	127,5	715,8	11,00	16,00	737 x 456 x 456	50	130	380	6x32	225	330	F	

*rated current at 400V (50Hz) / 460V (60Hz) ¹⁾alternative drilling template: l=65; b=140; d=4x13.0 included

External Vibrators

1

BRECON External Vibrators

3000/3600rpm, IP65



18 135

	Part Number	Mechanical		Electrical		Dimensions						Weight [Kg]	Picture
		Centrifugal force [kN]	Working moment [kgcm]	Power input [kW]	Rated current [A]*	L x W x H [mm]	h	l	b	d	m		
3000rpm 50Hz 230/400V 3~	18 131 102	0,4	0,80	0,07	0,15	172 x 72 x 80	10	45	45	4xM6	42	3	A
	18 100 202 ¹⁾	1,2	2,40	0,15	0,27	198 x 165 x 125	25	115	135	4x10,5	78	5	B
	18 132 202 ¹⁾²⁾	2,6**	5,40	0,15	0,27	235 x 165 x 125	25	115	135	4x10,5	78	5	B
	18 117 202	3,0	6,00	0,30	0,64	260 x 160 x 165	90	90	125	4x13	60	10	C
	18 118 202	5,0	10,00	0,34	0,67	300 x 160 x 165	90	90	125	4x13	60	10	C
	18 134 102	7,0	14,00	0,52	1,00	295 x 190 x 185	100	90	154	4x13	70	16	C
	18 135 102	9,0	18,00	0,63	1,15	325 x 190 x 185	100	90	154	4x13	70	17	C
	18 120 202	14,0	28,00	1,00	1,85	350 x 250 x 220	125	100	200	4x17	90	30	C
	18 123 202	18,0	36,00	1,30	2,40	370 x 250 x 220	125	100	200	4x17	90	34	C
	18 126 202	28,0	56,00	2,20	4,00	490 x 330 x 340	175	140	248	4x22	175	93	C
	18 150 101	41,1	84,00	3,50	5,80	568 x 326 x 336	40	165	270	4x25	150	104,5	D
	18 156 101	55,2	112,00	5,00	8,00	609 x 355 x 362	40	210	295	4x29	166	143	D
	18 164 101	65,1	132,00	7,00	11,50	656 x 390 x 392	41	110	310	6x29	193	182,5	F
	18 168 101	74,5	150,00	8,00	13,00	686 x 390 x 414	45	115	320	6x29	192	210	F
18 172 101	93,7	190,00	9,00	14,50	672 x 390 x 414	45	115	320	6x29	192	216	F	
3600rpm 60Hz 265/460V 3~	18 131 114	0,4	0,60	0,07	0,15	172 x 72 x 80	10	45	45	4xM6	42	3	A
	18 100 214 ¹⁾	1,5	2,00	0,15	0,27	198 x 165 x 125	25	115	135	4x10,5	78	5	B
	18 132 214 ¹⁾²⁾	2,6**	3,80	0,15	0,27	235 x 165 x 125	25	115	135	4x10,5	78	5	B
	18 117 214	3,0	4,20	0,30	0,64	260 x 160 x 165	90	90	125	4x13	60	10	C
	18 118 214	5,0	7,00	0,34	0,70	300 x 160 x 165	90	90	125	4x13	60	10	C
	18 134 114	7,0	9,70	0,52	1,10	295 x 190 x 185	100	90	154	4x13	70	16	C
	18 135 114	9,0	12,00	0,63	1,30	325 x 190 x 185	100	90	154	4x13	70	17	C
	18 120 214	14,0	19,50	1,00	1,90	350 x 250 x 220	125	100	200	4x17	90	30	C
	18 123 214	18,0	25,00	1,30	2,50	370 x 250 x 220	125	100	200	4x17	90	33	C
	18 126 214	27,0	37,30	2,20	4,00	490 x 330 x 340	175	140	248	4x22	175	93	C
	18 150 113	49,0	70,00	4,00	5,80	568 x 326 x 336	40	165	270	4x25	150	102,5	D
	18 156 113	55,9	80,00	5,50	8,00	609 x 355 x 362	40	210	295	4x29	166	139,5	D
	18 164 113	61,8	88,00	7,30	11,00	656 x 390 x 392	41	110	310	6x29	193	178	F
	18 168 113	78,1	110,00	8,50	12,50	686 x 390 x 414	45	115	320	6x29	192	206	F
18 172 113	92,2	130,00	9,50	14,00	672 x 390 x 414	45	115	320	6x29	192	210	F	

*rated current at 400V (50Hz) / 460V (60Hz); **for short-time operation only;

¹⁾ alternative drilling template: l=65; b= 140; d=4x13 ²⁾ alternative drilling template: l=90; b=125; d=4x13 included

1

External Vibrators

BRECON External Vibrators

6000rpm, IP65



18 212

6000rpm, 200Hz												
Part Number	Mechanical Centrifugal force [kN]	Electrical			Dimensions							
		Voltage [V]	Power input [kW]	Rated current [A]	L x W x H [mm]	h	l	b	d	m	Weight [Kg]	Picture
18 212 203	8,0	250	0,68	2,10	260 x 160 x 165	90	90	125	4x13	60	9	C
18 212 209	8,0	42	0,68	12,60	260 x 160 x 165	90	90	125	4x13	60	9	C
18 220 203	10,0	250	1,00	3,20	295 x 190 x 185	100	90	154	4x13	70	15	C
18 220 209	10,0	42	1,00	19,00	295 x 190 x 185	100	90	154	4x13	70	15	C
18 220 251*	10,0	250	1,00	3,20	295 x 147 x 185	100	65	125	4x13	70	15	C
18 221 203	12,0	250	1,20	3,60	295 x 190 x 185	100	90	154	4x13	70	15	C
18 221 251*	12,0	250	1,20	3,60	295 x 147 x 185	100	65	125	4x13	70	15	C
18 221 205	14,0	250	1,20	3,60	295 x 190 x 185	100	90	154	4x12	70	15	C
18 221 209	14,0	42	1,20	21,50	295 x 190 x 185	100	90	154	4x13	70	15	C
18 221 210*	14,0	42	1,20	21,50	295 x 147 x 185	100	120	120	4x14	70	15	C
18 221 207*	14,0	250	1,20	3,60	295 x 147 x 185	100	65	125	4x15	70	15	C
18 215 203	16,0	250	2,00	5,70	350 x 250 x 220	125	100	200	4x17	90	27	C
18 217 203	18,0	250	2,40	7,50	370 x 250 x 220	125	100	200	4x17	90	27	C
18 218 203	20,0	250	2,60	7,90	370 x 250 x 220	125	100	200	4x17	90	27	C

*Slim version

BRECON External Vibrators

6000rpm, IP65



6000rpm, 100Hz												
Part Number	Mechanical Centrifugal force [kN]	Electrical			Dimensions							
		Voltage [V]	Power input [kW]	Rated current [A]	L x W x H [mm]	h	l	b	d	m	Weight [Kg]	Picture
18 221 351*	12,0	380	0,6	2,3	295 x 147 x 185	100	65	125	4x13	70	15	C
18 221 305	14,0	380	0,6	2,3	295 x 190 x 185	100	90	154	4x13	70	15	C
18 221 307*	14,0	380	0,6	2,3	295 x 147 x 185	100	120	120	4x17	70	15	C

*Slim version

BRECON External Vibrators

9000/10800rpm, IP65



18 219

9000rpm, 150Hz

Part Number	Mechanical Centrifugal force [kN]	Electrical			Dimensions								
		Voltage [V]	Power Input [kW]	Rated current [A]	L x W x H [mm]		h	l	b	d	m	Weight [Kg]	Picture
18 219 212	10 (8)*	42	1,20	18,3	295 x 190 x 185		100	90	154	4x13	70	14	C
18 213 112	16 (13,5)*	42	1,80	28	350 x 250 x 220		125	100	200	4x17	90	25	C

10800rpm, 180Hz

18 216 015	18 (15)*	230	2,80	8,1	370 x 250 x 220		125	100	200	4x17	90	26	C
18 219 215	10 (8)*	230	1,20	4,3	295 x 190 x 185		100	90	154	4x13	70	16	C

*Values in parentheses are recommended for use of 8 hours or more

BRECON External Vibrators

12000rpm, IP65



18 219

12000rpm, 200Hz

Part Number	Mechanical Centrifugal force [kN]	Electrical			Dimensions								
		Voltage [V]	Power input [kW]	Rated current [A]	L x W x H [mm]		h	l	b	d	m	Weight [Kg]	Picture
18 219 203	10 (8,0)*	250	1,50	4,10	295 x 190 x 185		100	90	154	4x13	70	14	C
18 213 103	14 (12,5)*	250	2,40	6,50	350 x 250 x 220		125	100	200	4x17	90	26	C
18 216 203	18 (15,0)*	250	3,10	8,20	370 x 250 x 220		125	100	200	4x17	90	26	C

*Values in parentheses are recommended for use of 8 hours or more

1

External vibrators

BRECON SLIM2-Quick Release Vibrator
IP65**3000rpm, 50Hz**

Part Number	Mechanical Centrifugal force [kN]	Electrical			Dimensions	
		Voltage [V]	Power input [kW]	Rated current [A]	L x W x H [mm]	Weight [Kg]
18 132 551	4,0	220-260/380-440V	0,15	0,47/0,27A	300 x 215 x 140	13
18 135 513	9,0	220-260/380-440V	0,63	2,00/1,15A	260 x 215 x 177	20,5

6000rpm, 200Hz

18 221 515	14,0	250V	1,2	3,6	290 x 215 x 195	19,3
------------	------	------	-----	-----	-----------------	------

Ready mounted on BRECON quick release clamp SLIM2 with 2 Screws and 2 handle bars; including 1m power cable and CEE plug. Basically are all BRECON vibrators available as SLIM2. Dimensions without handle bars. Just ask us for more information.

BRECON SLIM2-Bottom Plate
for welding

Part Number	L x W x H [mm]	Weight [Kg]
SLIM2-116BW	216 x 60 x 25	1,7

BRECON Accessories**Special Bearing Grease**

Part Number	Quantity	Remarks
EW 560 / 23 14	0,25 kg tube	Special bearing grease (from -15°C to 100°C short-time 120°C)
EW 560 / 23 52	400 g cartridge	
EW 560 / 23 30	1 kg can	High-temperature bearing Grease (up to 170°C)

**Grease Gun**

Part Number	Remarks
EW 560 / 24 70	Grease gun with hollow and pointed nozzles

2

Control Units

BRECON Frequency Converters

IP54



Part numbers	Secondary				Primary		Weight [kg]	Dimensions H x B x T [mm]
	Power output with 250V / 200Hz [kVA]	Voltage at 200 Hz 3~ [V]	Con- tinous current [A]	Peak current (60 s) [A]	Voltage at 50/60 HZ 3~ [V]	Current [A]		
EW 578 / 4,0 E5	4,0	250	9,0	13,5	400	14,0	35	500 x 500 x 210
EW 578 / 5,5 E5	5,5	250	13,0	19,5	400	13,0	35	500 x 500 x 300
EW 578 / 7,5 E5	7,5	250	16,5	24,5	400	15,4	60	500 x 700 x 250
EW 578 / 11 E5	11,0	250	25,0	34,5	400	23,0	50	760 x 760 x 300
EW 578 / 14 E5	15,0	250	32,0	48,0	400	27,4	85	760 x 760 x 300
EW 578 / 18 E5	18,5	250	40,0	60,0	400	34,0	75	760 x 760 x 300
EW 578 / 20 E5	22,0	250	46,0	69,0	400	40,0	85	760 x 760 x 300
EW 578 / 28 E5	30,0	250	60,0	90,0	400	52,0	80	600 x 1000 x 400
EW 578 / 34 E5	34,0	250	75,0	112,5	400	66,0	100	1000 x 800 x 400

Frequency Converters with higher output power available on request

Electronically adjustable digital frequency converter, in modular design, high pulse frequency, sinusoidal output current, digital frequency indicator for stepless frequency changing for HF external vibrators, automatic current limiting, short circuit proof, filtered ventilation, secondary motor choke, mounted in steel-sheet cabinet.

BRECON Mobile Frequency Converters

electronic, with integrated distribution panel, IP54



Part Number	frequency converters					Distribution panel		Transport	Weight [Kg]
	Secondary			Primary		Number of motor protection switches	Setting range [A]		
	Power output with 250V / 200Hz [kW]	Continuous current [A]	Peak current (60 s) [A]	Voltage at 50/60HZ 3~ [V]	Current [A]				
EW560/2937*	4,0	9,0	13,5	400	9,3	2 external toggle switch	2,5 - 4,0	handle bar	35
EW560/2877**	7,5	16,5	24,7	400	15,4	4 with function lights	2,5 - 4,0	trolley	48
EW560/2801**	11,0	24,5	36,7	400	23,0	7 with function lights	2,5 - 4,0	trolley	50
EW560/2833**	15,0	30,5	45,7	400	27,4	9 with function lights	2,5 - 4,0	trolley	52
EW560/2834**	18,5	37,0	55,5	400	34,0	11 with function lights	2,5 - 4,0	trolley	60

Electronically adjustable electronic frequency converter, in modular design, high pulse frequency, sinusoidal output current

*Potentiometer for continuous frequency changing **Digital frequency indicator for continuous frequency changing for HF external vibrators, automatic current limiting, short circuit proof, filtered ventilation secondary motor choke, mounted on trolley with solid rubber wheels.

BRECON Frequency Converters

electro-mechanical, 200Hz, IP54

Part number	Secondary			Primary			Weight [kg]
	Energy output cos = 0,8 [kVA]	Voltage [V]	Full load current [A]	Energy input [kVA]	Voltage at 50 HZ 3~ [V]	Full load current [A]	
0 615 118 262	7,5 (9,5)*	250	17,3	11,0	400	16,8	78
0 615 119 262	11 (13,5)*	250	25,3	14,8	400	22,5	96
0 615 114 262	15 (19)*	250	34,6	17,0	400	25,7	166
0 615 116 262	20 (25)*	250	47,0	23,7	400	36,0	190
0 615 117 262	25 (30)*	250	58,0	30,6	400	46,5	230
0 615 115 262	30 (36)*	250	70,0	34,4	400	52,0	240

*Values in parentheses are valid for short-time operation
Other outputs available on request

2

Control Units

BRECON Standard Distribution Boxes

permanent installation, IP65



SV12 0304

Part number	On / Off switch with motor protection*	Group switch	Weight [Kg]	Dimensions L x W x H [mm]	Remarks		
SV 020004	2	0	10	380 x 380 x 210	Adjustment range of the motor protection switch: 2,5 - 4,0 A		
SV 020104	2	1					
SV 030004	3	0	10	380 x 380 x 210			
SV 030104	3	1					
SV 040004	4	0	10	380 x 380 x 210		These motor protection switches are also available: 1,6 - 2,5 A 4,0 - 6,3 A 6,3 - 10,0 A 10,0 - 16,0 A	
SV 040104	4	1					
SV 050004	5	0	12	380 x 380 x 210			
SV 050104	5	1					
SV 060004	6	0	12,5	380 x 380 x 210			Modular design, steel-sheet cabinet; motor protection switch with tomy switch; connection through large terminal strip
SV 060104	6	1	13				
SV 060204	6	2	19,5				
SV 070004	7	0	15				
SV 070204	7	2	17				
SV 080004	8	0	15,5		380 x 380 x 210		
SV 080204	8	2	21				
SV 090004	9	0	19		600 x 380 x 210		
SV 090204	9	2	19,5				
SV 090304	9	3	22				
SV 100004	10	0	19,5		600 x 380 x 210		
SV 100204	10	2	21				
SV 110204	11	2	22	600 x 380 x 210			
SV 110304	11	3					
SV 120004	12	0	22	600 x 380 x 210			
SV 120204	12	2	23				
SV 120304	12	3	2,5				

*Thermal and short circuit tripping of breakers

Distribution boxes with additional On / Off switches and group switch combinations are available.

BRECON Radio Controls



Part number	Equipment	Remarks	Dimensions [mm]	Weight [Kg]
EW 560 / 3078	2 channels, 2 transmitters, 1 receiver	Transmitter frequency: 434 MHz Transmitter energy: $1 \times 10^{-3} \text{W}$	Transmitter: 110 x 75 x 25	0,15
EW 560 / 3079	3 channels, 2 transmitters, 1 receiver	Supply voltage: • transmitter: 3 x 1,5V battery • receiver: 230V / 50Hz	Receiver: 120 x 115 x 50	0,90
EW 560 / 3080	4 channels, 2 transmitters, 1 receivers	Output receiver: Potential-free relay contact per channel; breaking capacity 230V / 5A		
Inquire for part number	up to 8 channels			

BRECON Large Display Indicators



EW560 / 2189










Part number	Remark
EW 560 / 2188	1-field indicator, 3 characters, LED (red), non -reflective, adjustable display
EW 560 / 2189	2-field indicator, 3 characters, LED (red), non -reflective, adjustable display

2

Control Units

BRECON CEE Plug Connections

for frequencies of 100-300 Hz, DIN 49 462/63 and DIN 49 465

Part number	Voltage [V]	Load capacity [A]	Identification	Pictures (pictures show 250 V-versions)
1 614 482 048	250	16	HF plug 3P + 10h, green	
1 614 482 049	250	32		
1 614 482 050	42	32	HF plug 3P 4h, green	
1 614 482 062	42	63		
1 614 484 010	250	16	HF coupler socket 3P + 10h, green	
1 614 484 011	250	32		
1 614 484 012	42	32	HF coupler socket 3P 4h, green	
1 614 484 016	42	63		
1 614 485 024	250	16	HF wall socket 3P + 10h, green	
1 614 485 025	250	32		
1 614 485 026	42	32	HF wall socket 3P 4h, green	
1 614 485 035	42	63		
1 614 485 031	250	16	HF socket f. ext. mounting 3P + 10h, green	
1 614 485 032	250	32		
1 614 485 033	42	32	HF socket f. ext. mounting 3P 4h, green	
1 614 485 034	42	63		
1 614 482 056	250	32	HF attachment plug 3P + 10h, green	

More models available on request

2



3

Internal Vibrators

BRECON Internal Vibrator PROFI LINE

200 Hz, 42V or 250V

Part number	Head diameter [mm]	Length [mm]	Rated current [A]	Voltage [V]	Power input [W]	Weight [Kg]
18 031 001	31	330	10	42	750	10
18 031 003	31	330	1,7	250	750	10
18 038 601 *	38	310	4,0	42	270	10
18 038 603 *	38	310	1,0	250	270	11
18 050 601 *	50	360	10,0	42	600	15
18 050 603 *	50	360	2,0	250	600	15
18 058 601 *	58	370	14,0	42	830	18
18 058 603 *	58	370	2,5	250	830	16
18 065 601 *	65	380	18,0	42	1100	20
18 065 603 *	65	380	3,0	250	1100	20
18 080 001	80	450	55	42	4000	30
18 080 003	80	450	9,3	250	4000	36



5m hose length, 15m power cable, CEE plug and switch

*Also available with Vulkollan cap on request at extra costs (please indicate when ordering)

ATTENTION: For comparison with other internal vibrator manufacturers, the indicated current is for the no-load condition (i.e. vibrator head hanging vertically and operating in free air). Under full-load conditions (i.e. vibrator head fully submersed in no-slump concrete), the current can be double the no-load current.

BRECON Spade Grip Pokers PROFI LINE

200 Hz, 42V



Part number	Head diameter [mm]	Length [mm]	Rated current [A]	Voltage [V]	Power input [W]	Weight [Kg]
18 031 005	31	330	10	42	750	10
18 038 605	38	310	4	42	270	9
18 050 605	50	360	10	42	600	13
18 058 605	58	370	14	42	830	14
18 065 605	65	380	18	42	1100	18

1m hose length, 15m power cable, CEE plug and operating handle

Also available with Vulkollan cap on request at extra costs (please indicate when ordering)

ATTENTION: For comparison with other internal vibrator manufacturers, the indicated current is for the no-load condition (i.e. vibrator head hanging vertically and operating in free air). Under full-load conditions (i.e. vibrator head fully submersed in no-slump concrete), the current can be double the no-load current.

BRECON Spare Heads for Internal Vibrators PROFI LINE



Part number	Head diameter [mm]	Length [mm]	Rated current [A]	Voltage [V]	For Type part number	Weight [Kg]
18 031 051	31	330	10	42	18 031 001 + 005 18 031 051	2
18 031 053	31	330	1,7	250		2
18 038 651 *	38	310	4	42	18 038 601 + 605 18 038 603	2
18 038 653 *			1	250		
18 050 651 *	50	360	10	42	18 050 601 + 605 18 050 603	4
18 050 653 *			2	250		
18 058 651 *	58	370	14	42	18 058 601 + 605 18 058 603	6
18 058 653 *			2,5	250		
18 065 651 *	65	380	18	42	18 065 601 + 605 18 065 603	8
18 065 653 *			3	250		
18 080 051	80	450	55	42	18 080 001 + 005	13
18 080 053	80	450	9,3	250	18 080 003	13

*Also available with Vulkollan cap at extra costs (please indicate when ordering)

ATTENTION: For comparison with other internal vibrator manufacturers, the indicated current is for the no-load condition (i.e. vibrator head hanging vertically and operating in free air). Under full-load conditions (i.e. vibrator head fully submersed in no-slump concrete), the current can be double the no-load current.



That's flexible!

3

Internal Vibrators

BRECON Mobile Frequency Converter

electro-mechanical, 200 Hz IP44



Part number	Secondary				Primary		Transport	Weight [Kg]
	Power output cos = 0,8 [kVA]	Voltage [V]	Rated current [A]	Number of sockets	Voltage at 50 HZ [V]	Full load current [A]		
0 615 007 001	0,7	42	9,6	1	1~ 230V	4,0	handle bar	14,5
0 615 007 251		250	1,6					
0 615 012 001	1,2	42	16,5	1	1~ 230V	6,5	handle bar	17,8
0 615 012 251		250	2,8					
0 615 018 001	1,8	42	24,8	2	1~ 230V	9,0	handle bar	27,0
0 615 018 251		250	4,1					
0 615 024 001	2,4	42	33,0	2	1~ 230V	11,0	slide	37,0
0 615 024 251		250	5,5					
0 615 012 003	1,2	42	16,5	1	3~ 400V	2,6	handle bar	16,7
0 615 012 253		250	2,8					
0 615 018 003	1,8	42	24,8	2	3~ 400V	3,6	handle bar	27,0
0 615 018 253		250	4,1					
0 615 024 003	2,4	42	33,0	2	3~ 400V	4,5	slide	28,0
0 615 024 253		250	5,5					
0 615 030 003	3,0	42	41,3	3	3~ 400V	6,0	slide	46,0
0 615 030 253		250	6,8					
0 615 040 003	4,0	42	55,0	3	3~ 400V	8,0	slide	48,0
0 615 040 253		250	9,0					
0 615 060 003	6,0	42	82,6	4	3~ 400V	10,8	trolley	87,0
0 615 060 253		250	13,0					

With 1.5 m power cable and plug. Also available for other currents.

All converters have overload capacity and are overheat protected.

To determine the necessary size of the converter, add the power inputs (in kVA) of the HF vibrators that are to be run at the same time. Choose the converter that is rated for the next larger power output (in kVA).

BRECON Mobile Frequency Converter

electronic, 200Hz, IP45



Part number	Secondary				Primary			Weight [Kg]
	Energy output [kW]	Rated Voltage [V]	Rated current [A]	Number of sockets	Voltage at 50 HZ [V]	Full load current [A]	Transport	
EW578/1M58	1,5	42	30	1	1~ 230V	14	handle bar	27,0
EW578/1N58	1,5	250	5	1	1~ 230V	15	handle bar	10,0
EW578/2M58	3,0	42	56	2	1~ 230V	16	handle bar	37,0
EW578/2N58	3,0	250	10	2	1~ 230V	16	handle bar	11,0
EW578/2H58	5,5	42	56	2	3~ 400V	20	handle bar	39,0
EW578/2K58	5,5	250	10	2	3~ 400V	20	handle bar	20,0
EW578/3H58	7,5	42	84	3	3~ 400V	26	handle bar	39,0
EW578/3K58	7,5	250	15	3	3~ 400V	26	handle bar	24,0
EW578/4H58	11,0	42	112	4	3~ 400V	35	trolley	67,0
EW578/4K58	11,0	250	20	4	3~ 400V	35	trolley	24,0
EW578/3P58	5,5	42	84	3	3~ 230V	22	handle bar	38,0
EW578/4K58	5,5	250	15	3	3~ 230V	23	handle bar	11,0

With 4 m power cable and plug. Also available for other inputs/outputs.
All converters have overload capacity and are overheat protected.

3

Internal Vibrators

BRECON Flexible Shaft Vibrators

12000rpm

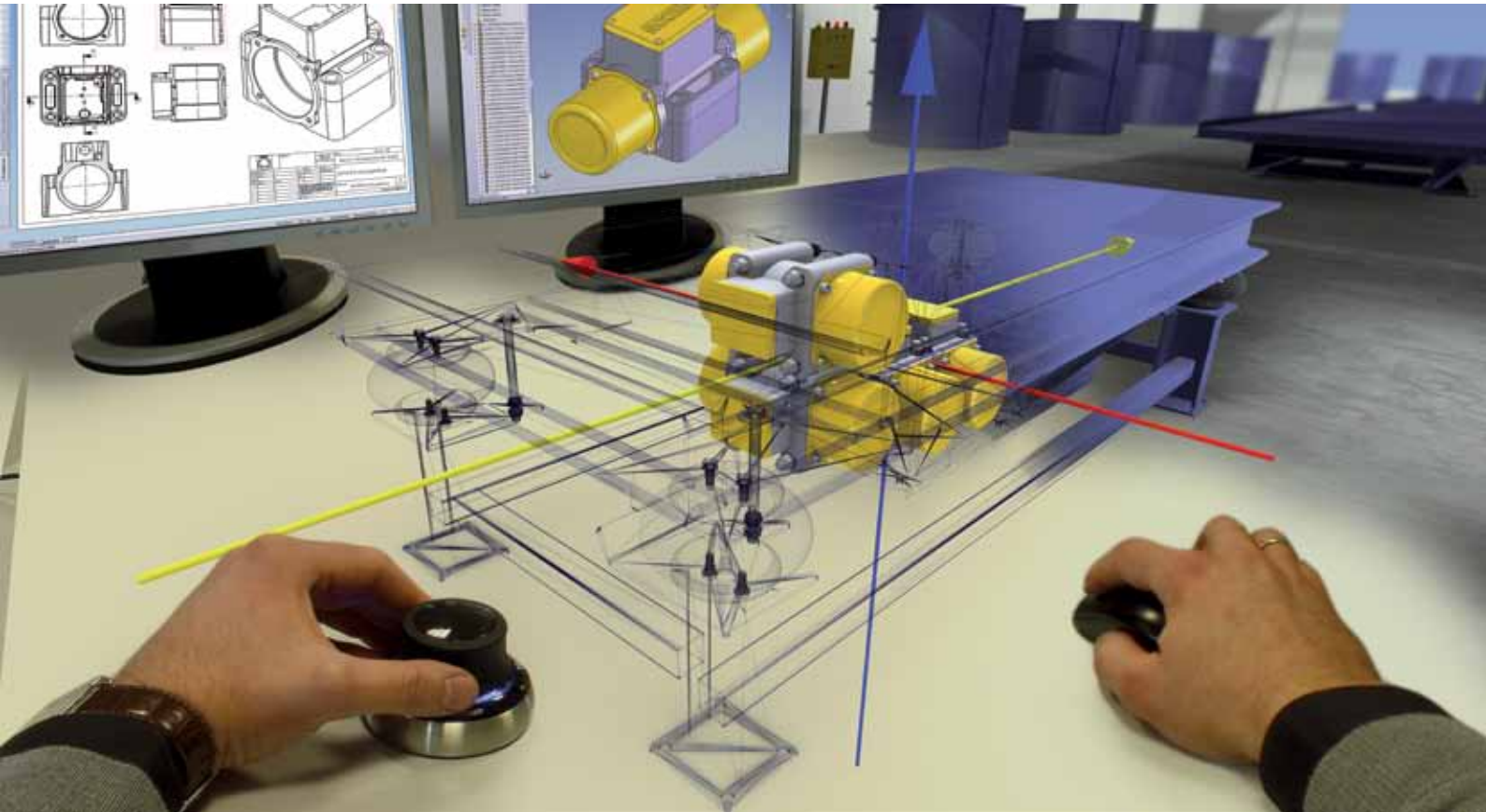
Part number	Centrifugal force [kN]	Head Diameter [mm]	Total length [m]	Amplitude [mm]	Vibrations [1/min]	Weight [Kg]
18 028 910	2,0	28	1,0	0,9	12000	2,8
18 028 915			1,5			2,5
18 028 920	2,0	28	2,0	0,9	12000	2,2
18 028 925			2,5			2,3
18 028 930	2,0	28	3,0	0,9	12000	2,4
18 028 935			3,5			2,5
18 038 910	3,5	38	1,0	1,1	12000	3,5
18 038 915			1,5			3,6
18 038 920	3,5	38	2,0	1,1	12000	3,7
18 038 925			2,5			3,8
18 038 930	3,5	38	3,0	1,1	12000	3,9
18 038 935			3,5			4
18 045 910	3,8	45	1,0	1,6	12000	3,7
18 045 915			1,5			3,8
18 045 920	3,8	45	2,0	1,6	12000	3,9
18 045 925			2,5			4
18 045 930	3,8	45	3,0	1,6	12000	4,1
18 045 935			3,5			4,2

The total length refers to the hose and the head

BRECON Drive Motors for Flexible Shaft Vibrators

Part number	Power input [W]	Voltage [V]	Mains frequency [Hz]	Current [A]	Revolution [1/min]	Weight [Kg]
18 014 901	600	230	50	3	4000	3
18 014 913	600	115	60	6	4000	3

including handle bar, 10m power cable and plug



4

Special Vibrators

BRECON Direct Current External Vibrators

3680rpm, IP65



18 961

Partnumber	Centrifugal force [kN]	Direct current [V]	Power input [kW]	Rated current [A]	L x W x H						Weight [Kg]	Picture
					[mm]	h	l	b	d	m		
18 961 302	1,4	12	0,15	16,6	198 x 165 x 125	25	115	135	4x10,5	80	6	B
18 961 303	1,4	24	0,15	6,3	198 x 165 x 125	25	115	135	4x10,5	80	6	B
18 961 304	2,2	12	0,17	13,8	198 x 165 x 125	25	115	135	4x10,5	80	6	B
18 961 305	2,2	24	0,17	6,9	198 x 165 x 125	25	115	135	4x10,5	80	6	B
18 961 306	1,6	12	0,16	13,2	198 x 165 x 125	25	115	135	4x10,5	80	6	B
18 961 307	1,8	24	0,16	6,6	198 x 165 x 125	25	115	135	4x10,5	80	6	B

with 2.5m power cable, alternative drilling template: l=65; b=140; d=4x13.0 included

BRECON Tampers

3000/3600rpm, IP65

Part number	Centrifugal force [kN]	Rated voltage range [V]	Mains frequency [Hz]	Power input [kW]	Rated current [A]	H x B x T [mm]	Weight [Kg]	Remarks
18 902 201	1,4	220-260 / 380-440 (3~)	50	0,15	0,47 0,27	238 x 430 x 183	12	<ul style="list-style-type: none"> • incl. 4m power cable without plug • supplied without accessories
18 902 213	1,4	220-265 / 380-460 (3~)	60	0,15	0,47 0,27	238 x 430 x 183	12	
18 902 250	1,4	65 / 110 (3~)	50	0,15	1,60 0,94	238 x 430 x 183	11	
18 902 502	1,4	65 / 110 (3~)	60	0,15	1,60 0,94	238 x 430 x 183	12	



BRECON Accessories for Tamping

Part number	Total length [mm]	Foot print [mm]	Shank length [mm]	Shank diameter [mm]	Weight [Kg]	Picture
1 618 603 301	560	rund Ø 72	100	35	2	1
1 618 603 302	560	100 x 80	100	35	2	2
1 618 603 303	560	150 x 150	100	35	3	3
1 618 603 304	560	200 x 35	100	35	2	4
1 618 603 301	560	rund Ø 72	100	35	2	1
1 618 603 302	560	100 x 80	100	35	2	2
1 618 603 303	560	150 x 150	100	35	3	3
1 618 603 304	560	200 x 35	100	35	2	4



SLIM2 Quick Release Vibrator

The absolute lightweight in its class:

Only 18.9kg at 14kN and 6.000rpm
25% lighter than its competitors

Superb handling:

Easy change among moulds
e.g. 12 vibrators in 10-15 min

The best price/performance relationship

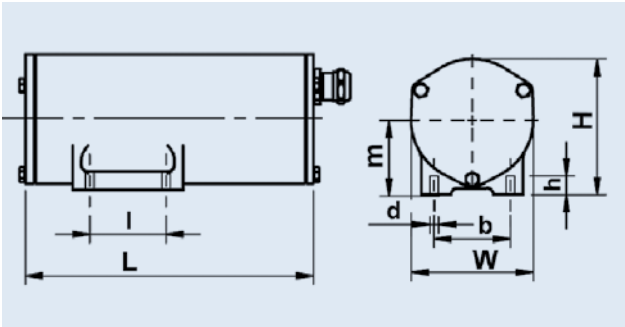
Supreme compaction quality despite low investment
SL version: lower noise level than comparable vibrators

www.brecon-vibration.us/slim2

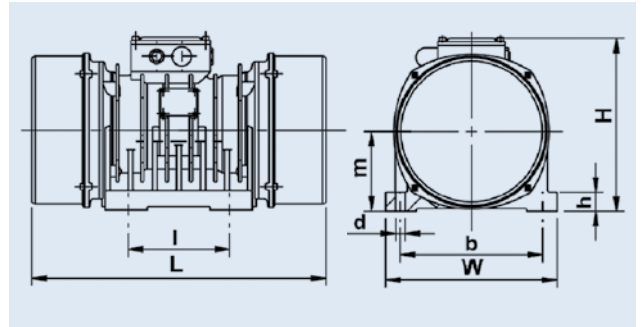
BRECON GmbH - Tel: 1-815-768-4848, Fax: +49-221-9544277, mail@brecon-vibration.us

 **BRECON**
smart vibration technology

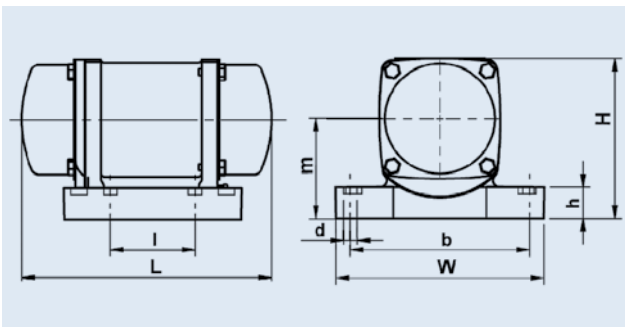
Picture A



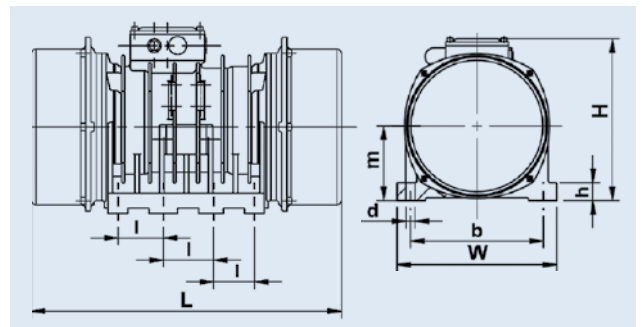
Picture D



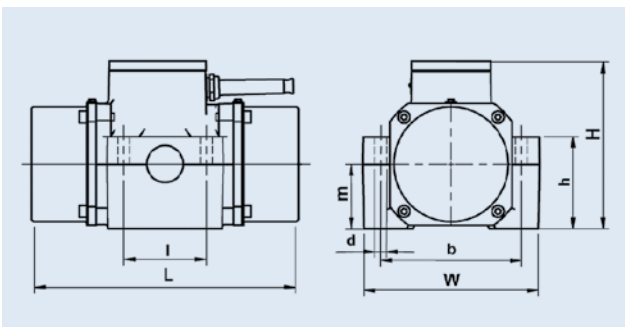
Picture B



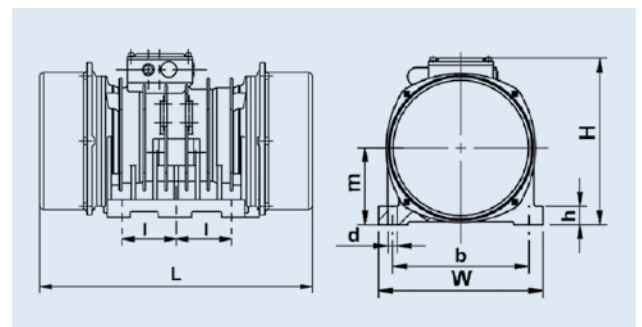
Picture E



Picture C



Picture F





BRECON

Vibrationstechnik GmbH

P.O. Box 45 01 69
D-50876 Cologne

Telephone +49 [0] 221 9 54 42 70
Telefax +49 [0] 221 9 54 42 77

info@brecon-vibration.com
www.brecon-vibration.com